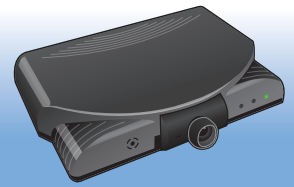


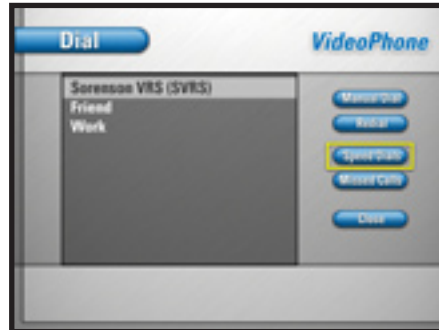
It's your right to choose! Add CADVRS.TV to your VP-100™



Per FCC regulations, VP-100 can be used to contact any VRS provider!



Step 1 • Main Menu:
Select "Dial"



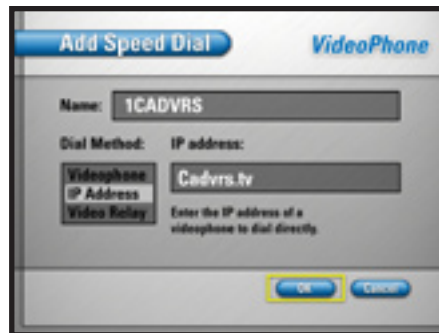
Step 2 • Dial List:
Select "Speed Dial"



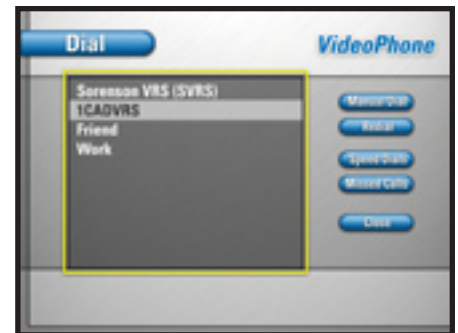
Step 3 • Speed Dial List:
Select "Add"



Step 4 • Add Speed Dial:
On name input box, press to select the letters or numbers.
Name: 1CADVRS
Select "OK"



Step 5 • Speed Dial List:
On dial method menu, select IP Address.
IP Address: Cadvrs.tv
Select "OK"



Step 6 • Using CSDVRS:
Select "1CADVRS" to call CSDVRS!



Step 7 • Using CADVRS:
Connect with CADVRS!

Thank you for supporting CAD!



www.cadvrs.com