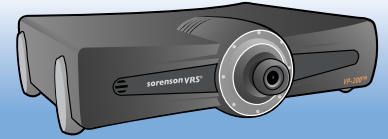
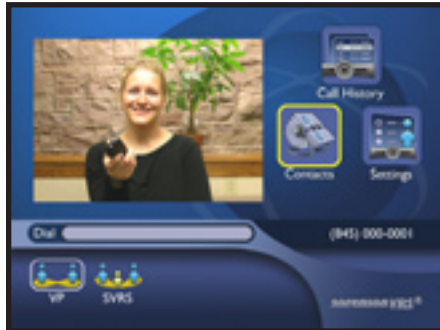


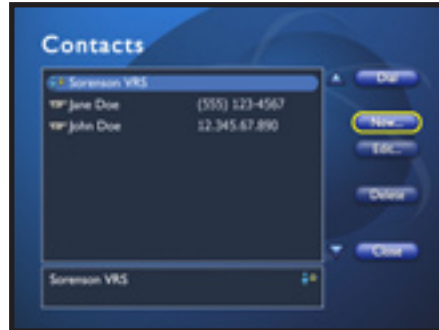
It's your right to choose! Add CADVRS.TV to your VP-200™



Per FCC regulations, VP-200 can be used to contact any VRS provider!



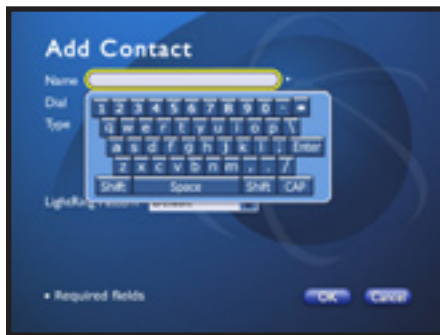
Step 1 • Main Menu:
Select "Contacts"



Step 2 • Contacts:
Select "New..."



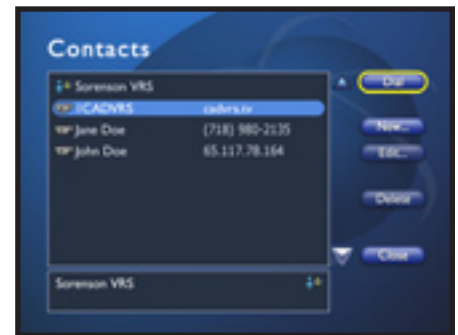
Step 3 • Add Contact:
Select "Name"



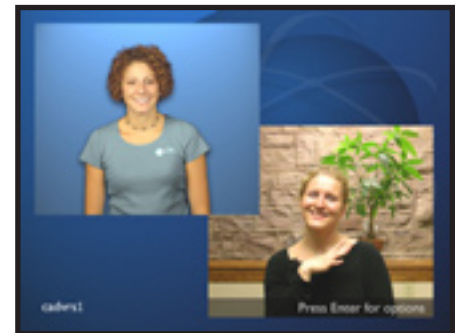
Step 4 • Add Contact:
In the Name box, press "Keyboard" and use arrows to select letters or numbers.



Step 5 • Add Contact:
Enter the information
Name: 1CADVRS
Dial: cadvrs.tv
Type: Video Point-to-Point
Select "OK"



Step 6 • Contacts:
Select "1CADVRS" to call CADVRS!



Step 7 • Using CADVRS:
Connect with CADVRS!

Thank you for supporting CAD!

"Sorenson Communications" and "VP-200" are the trademarks of Sorenson Communications Inc.



www.cadvrs.com